

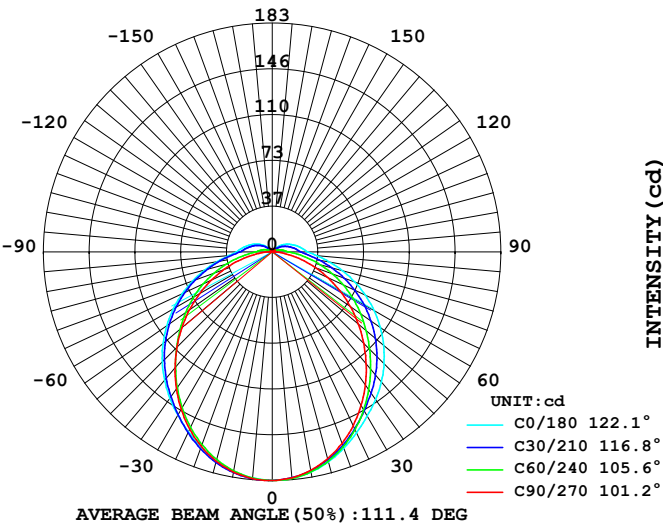
LUMINAIRE PHOTOMETRIC TEST REPORT

Report number:

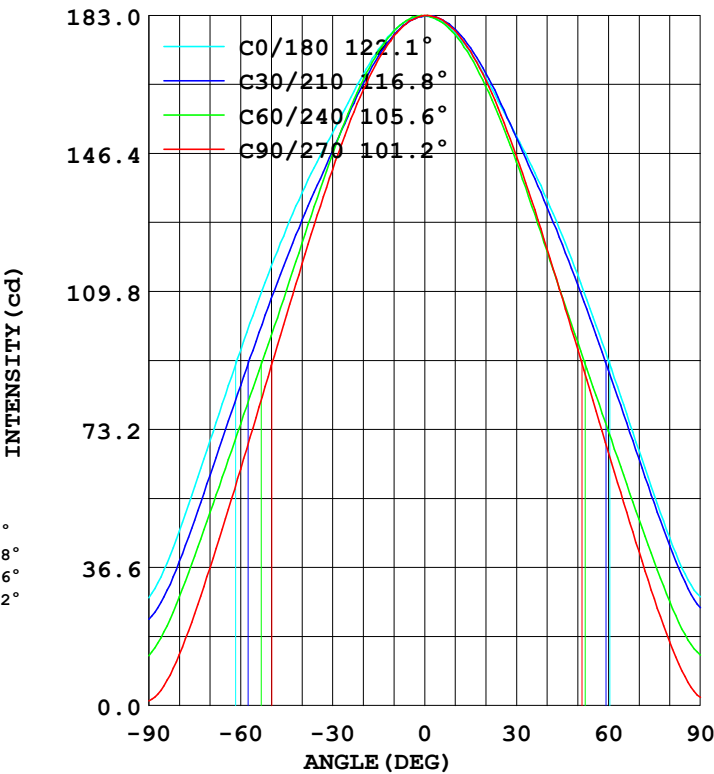
MANUFACTURER:		
Address:		
NAME: 200mA 6500K with trim	TYPE:	WEIGHT: 0.5
SPECIFICATION:	DIMENSION: 0.245*0.125*0.07	SERIAL No.:

DATA OF LAMP		Imax(cd)	183.0	S/MH (C0/180)	1.24
MODEL		EFFICIENCY (%)	100.0	S/MH (C90/270)	1.16
NOMINAL POWER(W)	7	TOTAL FLUX(lm)	580.67	Voltage(V)	229.5
RATED VOLTAGE (V)	230	EFFICIENCY (lm/W)	83.9	Current(A)	0.034
NOMINAL FLUX(lm)	580.7	η up (%)	7.9	Power(W)	6.924
LAMPS QUANTITY	1	η down (%)	92.1	Power Factor (PF)	0.895
TEST VOLTAGE (V)	229.6	Effective Flux(lm)	546.5	EEI	0.000 (E)

LUMINOUS INTENSITY DISTRIBUTION



LUMINOUS INTENSITY DISTRIBUTION



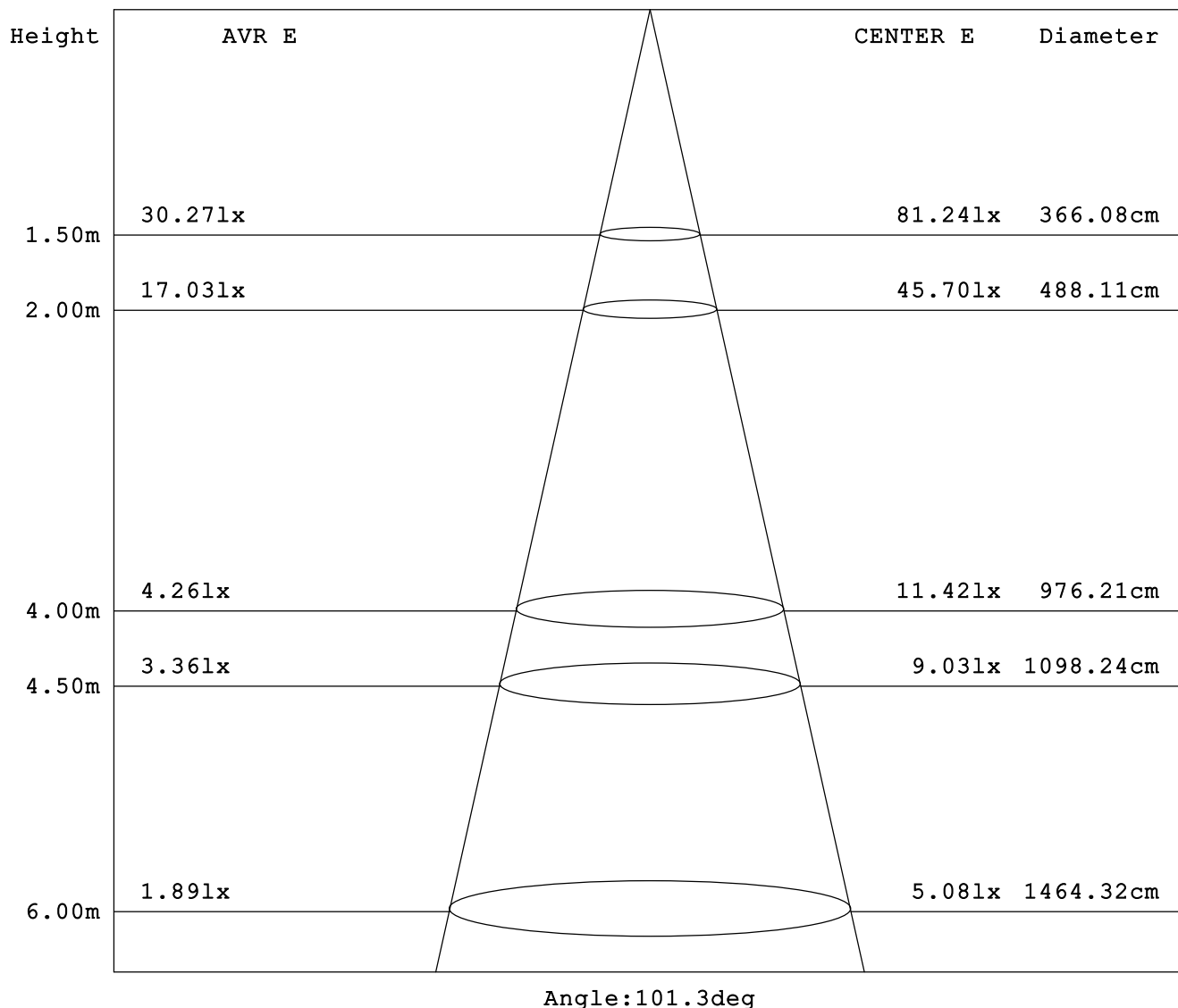
Test System: HopooColor HPG1800  
Temperature: 25.3 DEG  
Operators: W  
Test Date: 2023年07月04日

Test Set: 5.0 deg/s C-Gamma (TYPE C)  
Humidity: 65.0%  
Test Distance: 8.450 m  
Remarks:

### AVERAGE AND CENTER E Figure

Report number:

MANUFACTURER:		
Address:		
NAME: 200mA 6500K with trim	TYPE:	WEIGHT: 0.5
SPECIFICATION:	DIMENSION: 0.245*0.125*0.07	SERIAL No.:



Test System: HopooColor HPG1800  
 Temperature: 25.3DEG  
 Operators: W  
 Test Date: 2023年07月04日

Test Set: 5.0deg/s C-Gamma (TYPE C)  
 Humidity: 65.0%  
 Test Distance: 8.450 m  
 Remarks:

ZONAL FLUX DIAGRAM

Report number:

MANUFACTURER:		
Address:		
NAME: 200mA 6500K with trim	TYPE:	WEIGHT: 0.5
SPECIFICATION:	DIMENSION: 0.245*0.125*0.07	SERIAL No.:

γ	C0	C45	C90	C135	C180	C225	C270	C315	γ	Zone	total
5.0	181.8	181.6	181.5	181.7	181.5	181.7	182.0	181.7	0- 5	4.358	4.358
10.0	179.0	178.2	177.5	178.3	178.3	178.5	178.8	178.5	5- 10	12.88	17.24
15.0	173.9	172.7	171.2	172.8	173.1	173.1	173.4	173.2	10- 15	20.84	38.08
20.0	167.2	165.4	163.2	165.5	166.3	165.9	165.8	165.8	15- 20	27.90	65.99
25.0	159.7	156.5	153.3	156.6	158.8	157.1	156.4	157.0	20- 25	33.82	99.82
30.0	151.8	146.6	142.0	146.7	150.9	147.3	145.7	147.1	25- 30	38.46	138.2
35.0	144.1	136.2	130.0	136.4	142.9	136.8	133.8	136.5	30- 35	41.82	180.1
40.0	135.8	125.5	117.0	125.6	134.1	126.2	121.0	125.9	35- 40	43.90	224.0
45.0	126.5	114.3	103.5	114.3	124.4	115.1	108.0	114.8	40- 45	44.64	268.6
50.0	116.3	102.9	90.10	102.9	114.1	103.9	94.39	103.6	45- 50	44.13	312.8
55.0	105.7	91.53	76.32	91.50	103.1	92.57	80.97	92.25	50- 55	42.43	355.2
60.0	94.17	79.72	62.69	79.72	91.53	80.86	67.26	80.47	55- 60	39.63	394.8
65.0	82.25	67.93	49.55	67.97	79.82	69.15	53.76	68.68	60- 65	35.84	430.7
70.0	70.26	56.08	36.48	56.26	67.68	57.44	40.91	56.87	65- 70	31.22	461.9
75.0	57.97	44.37	24.27	44.69	55.69	45.87	28.34	45.12	70- 75	25.99	487.9
80.0	46.19	33.48	13.56	33.98	44.55	35.02	16.85	34.09	75- 80	20.47	508.4
85.0	35.98	24.16	5.212	24.91	34.91	25.81	7.711	24.66	80- 85	15.21	523.6
90.0	28.56	18.02	1.213	19.06	28.77	19.63	2.142	18.20	85- 90	11.06	534.7
95.0	25.27	15.35	0.928	16.27	25.77	16.88	1.142	15.45	90- 95	8.872	543.5
100.0	22.49	13.13	1.071	13.99	22.92	14.53	1.142	13.28	95-100	7.661	551.2
105.0	19.77	11.06	1.142	11.78	20.13	12.31	1.213	11.21	100-105	6.518	557.7
110.0	17.20	9.103	1.213	9.710	17.56	10.17	1.285	9.210	105-110	5.419	563.1
115.0	14.78	7.140	1.356	7.675	14.99	8.175	1.356	7.318	110-115	4.359	567.5
120.0	12.28	5.426	1.499	5.855	12.49	6.319	1.499	5.640	115-120	3.384	570.9
125.0	9.924	3.998	1.570	4.284	9.996	4.783	1.570	4.391	120-125	2.535	573.4
130.0	7.354	2.963	1.713	3.177	7.354	3.641	1.713	3.320	125-130	1.854	575.3
135.0	4.926	2.142	1.856	2.284	4.783	2.677	1.785	2.427	130-135	1.290	576.6
140.0	2.784	1.927	1.927	1.927	2.784	2.034	1.927	1.999	135-140	0.871	577.4
145.0	2.070	1.999	1.999	1.999	2.142	2.106	1.999	2.106	140-145	0.684	578.1
150.0	2.142	2.070	2.142	2.070	2.142	2.177	2.142	2.177	145-150	0.616	578.7
155.0	2.142	2.142	2.213	2.142	2.284	2.213	2.213	2.249	150-155	0.548	579.3
160.0	2.213	2.213	2.284	2.213	2.356	2.284	2.284	2.284	155-160	0.468	579.7
165.0	2.284	2.284	2.284	2.284	2.356	2.356	2.356	2.356	160-165	0.379	580.1
170.0	2.284	2.356	2.356	2.356	2.427	2.391	2.427	2.391	165-170	0.278	580.4
175.0	2.356	2.391	2.356	2.356	2.427	2.427	2.427	2.427	170-175	0.171	580.6
180.0	2.427	2.427	2.427	2.427	2.427	2.427	2.356	2.427	175-180	0.058	580.6
DEG	LUMINOUS INTENSITY:cd									UNIT:lm	

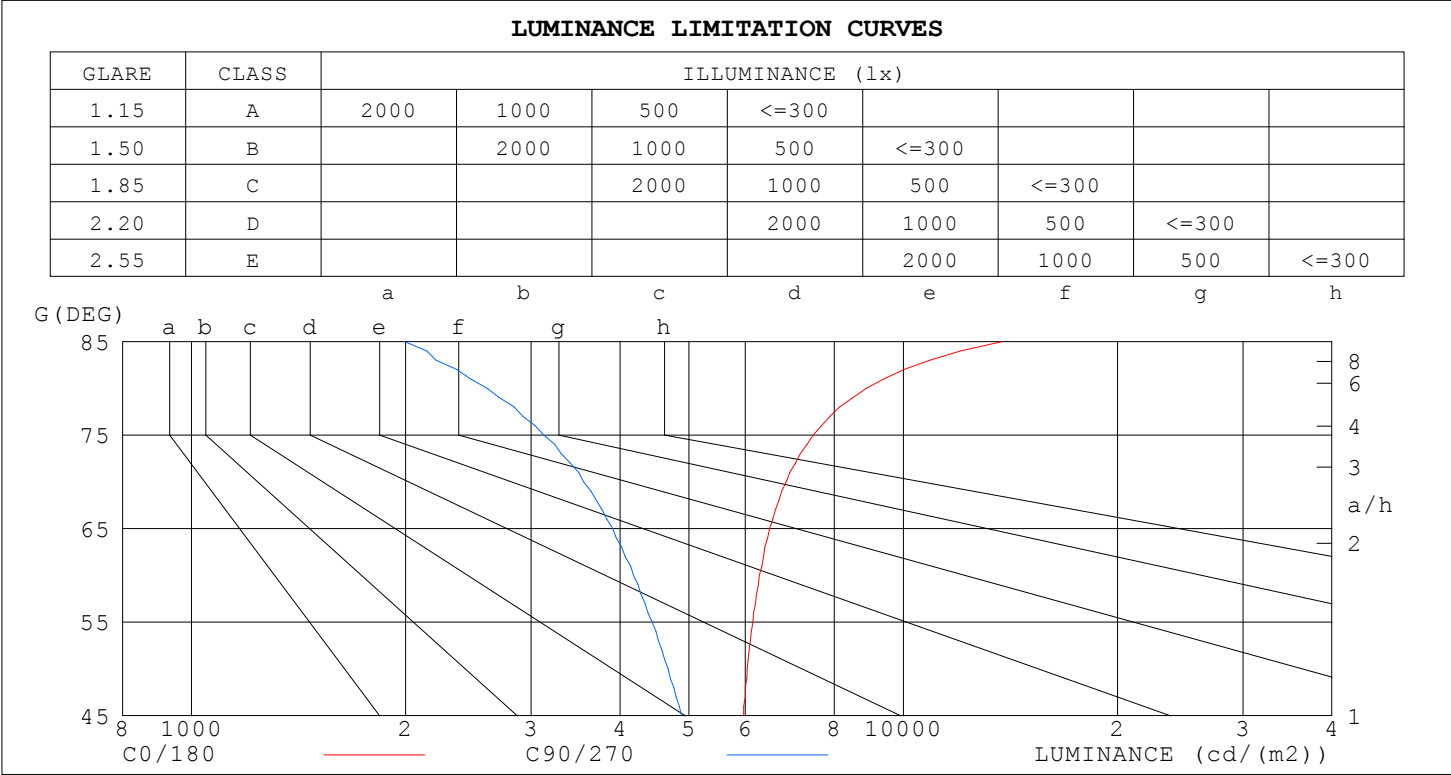
Test System:HopooColor HPG1800  
Temperature:25.3DEG  
Operators:W  
Test Date:2023年07月04日

Test Set: 5.0deg/s C-Gamma (TYPE C)  
Humidity:65.0%  
Test Distance:8.450 m  
Remarks:

LUMINANCE LIMITATION CURVES

Report number:

MANUFACTURER:					
Address:					
NAME: 200mA 6500K with trim		TYPE:		WEIGHT: 0.5	
SPECIFICATION:		DIMENSION: 0.245*0.125*0.07		SERIAL No.:	



LUMINANCE cd/m2		
G (DEG)	C0/180	C90/270
85	13763	1994
80	8868	2604
75	7467	3127
70	6848	3556
65	6488	3908
60	6279	4179
55	6145	4436
50	6035	4673
45	5964	4881

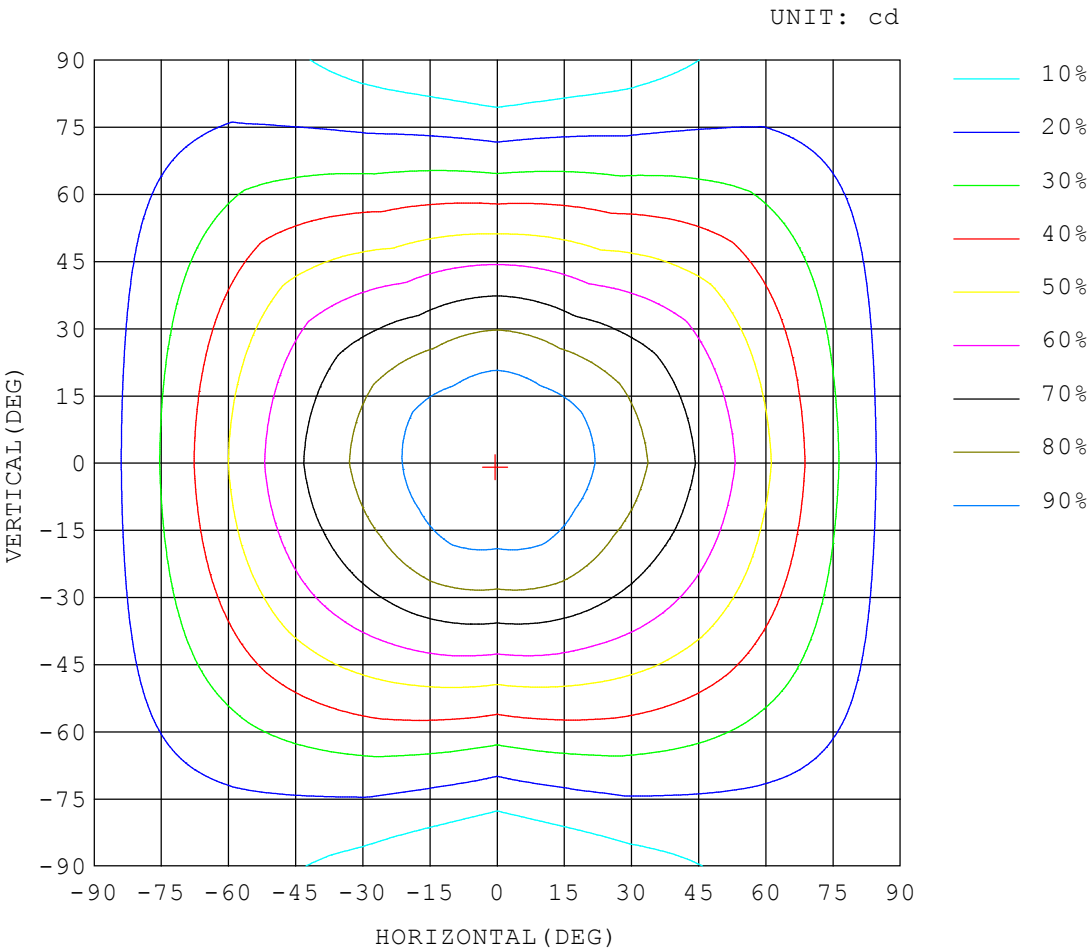
Test System:HopooColor HPG1800  
Temperature:25.3DEG  
Operators:W  
Test Date:2023年07月04日

Test Set: 5.0deg/s C-Gamma (TYPE C)  
Humidity:65.0%  
Test Distance:8.450 m  
Remarks:

ISOCANDELA DIAGRAM

Report number:

MANUFACTURER:		
Address:		
NAME: 200mA 6500K with trim	TYPE:	WEIGHT: 0.5
SPECIFICATION:	DIMENSION: 0.245*0.125*0.07	SERIAL No.:



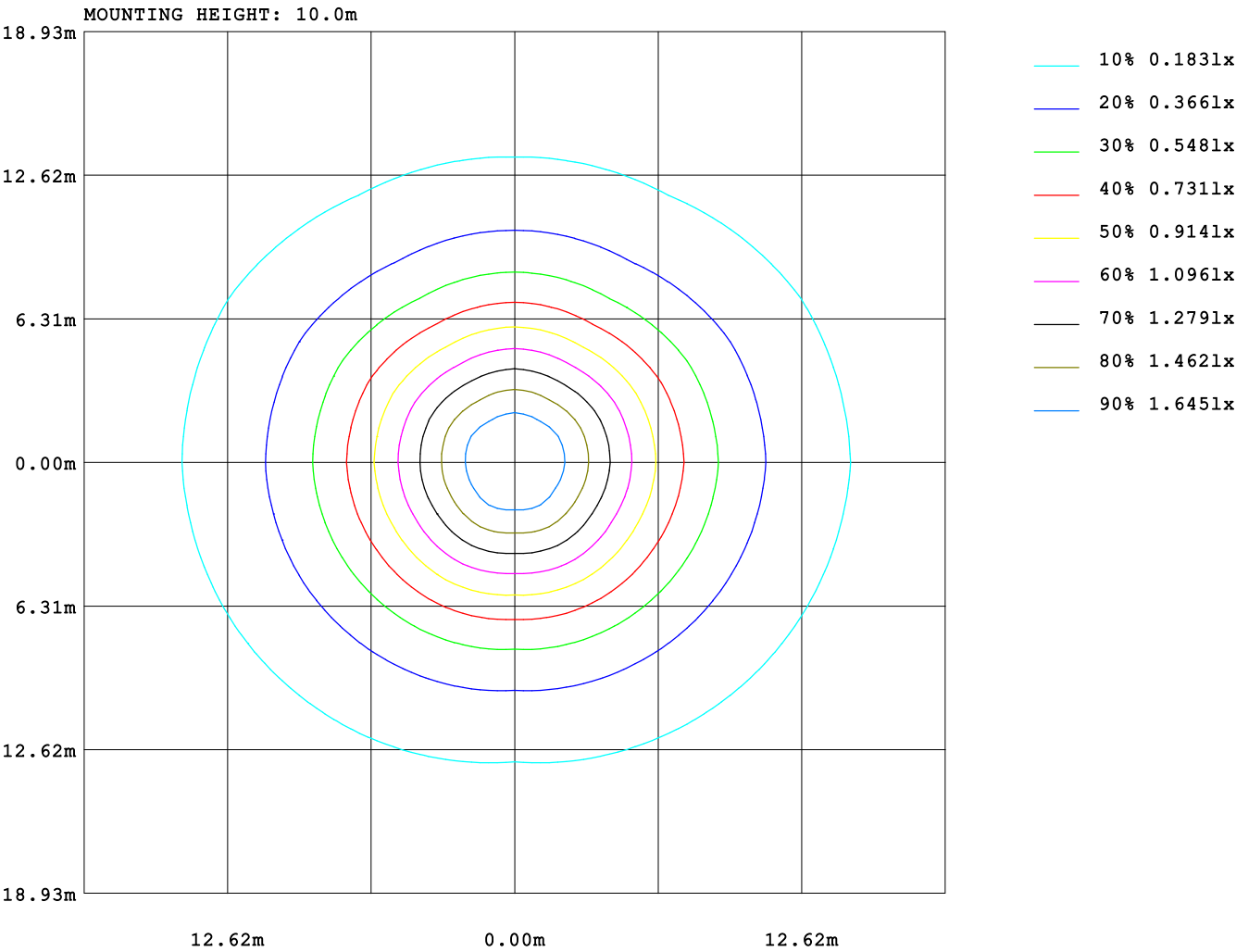
Test System:HopooColor HPG1800  
Temperature:25.3DEG  
Operators:W  
Test Date:2023年07月04日

Test Set: 5.0deg/s C-Gamma (TYPE C)  
Humidity:65.0%  
Test Distance:8.450 m  
Remarks:

ISOLUX DIAGRAM

Report number:

MANUFACTURER:		
Address:		
NAME: 200mA 6500K with trim	TYPE:	WEIGHT: 0.5
SPECIFICATION:	DIMENSION: 0.245*0.125*0.07	SERIAL No.:



Test System:HopooColor HPG1800  
Temperature:25.3DEG  
Operators:W  
Test Date:2023年07月04日

Test Set: 5.0deg/s C-Gamma (TYPE C)  
Humidity:65.0%  
Test Distance:8.450 m  
Remarks:

AREA LUMINOUS FLUX

Report number:

MANUFACTURER:																				
Address:																				
NAME: 200mA 6500K with trim									TYPE:						WEIGHT: 0.5					
SPECIFICATION:									DIMENSION: 0.245*0.125*0.07						SERIAL No.:					

VERTICAL (DEG)	AREA FLUX DIAGRAM																		UNIT:lm		Φ t	Φ a
	0.08	0.23	0.37	0.48	0.51	0.50	0.46	0.40	0.31	0.30	0.38	0.43	0.47	0.49	0.45	0.36	0.22	0.08	6.51	4.45		
90	0.08	0.23	0.37	0.48	0.51	0.50	0.46	0.40	0.31	0.30	0.38	0.43	0.47	0.49	0.45	0.36	0.22	0.08	6.51	4.45		
80	0.08	0.25	0.46	0.65	0.79	0.88	0.93	0.95	0.91	0.90	0.93	0.90	0.85	0.77	0.64	0.45	0.25	0.08	11.6	11.6		
70	0.08	0.29	0.56	0.87	1.13	1.34	1.50	1.63	1.66	1.65	1.61	1.48	1.32	1.12	0.86	0.56	0.29	0.08	18.0	18.0		
60	0.09	0.33	0.67	1.10	1.49	1.83	2.10	2.33	2.45	2.45	2.32	2.07	1.82	1.49	1.09	0.68	0.33	0.09	24.7	24.7		
50	0.09	0.36	0.78	1.31	1.85	2.32	2.69	3.03	3.24	3.24	3.01	2.67	2.31	1.85	1.31	0.79	0.37	0.09	31.3	31.3		
40	0.09	0.39	0.87	1.48	2.16	2.77	3.28	3.70	4.01	4.00	3.69	3.27	2.77	2.17	1.50	0.88	0.40	0.10	37.5	37.5		
30	0.10	0.42	0.94	1.63	2.40	3.16	3.80	4.32	4.67	4.67	4.31	3.80	3.16	2.42	1.65	0.96	0.43	0.10	42.9	42.9		
-30	0.10	0.44	1.00	1.73	2.56	3.41	4.19	4.81	5.17	5.17	4.81	4.19	3.42	2.59	1.76	1.02	0.45	0.10	46.9	46.9		
	0.10	0.45	1.02	1.79	2.66	3.53	4.35	5.06	5.45	5.45	5.07	4.37	3.56	2.69	1.83	1.05	0.46	0.10	49.0	49.0		
	0.10	0.45	1.02	1.78	2.64	3.51	4.32	5.02	5.44	5.44	5.03	4.34	3.54	2.68	1.82	1.05	0.46	0.10	48.8	48.8		
	0.10	0.43	0.98	1.70	2.52	3.35	4.11	4.79	5.17	5.17	4.79	4.11	3.36	2.55	1.74	1.01	0.45	0.10	46.4	46.4		
-40	0.10	0.41	0.92	1.58	2.33	3.08	3.77	4.35	4.64	4.64	4.35	3.77	3.09	2.35	1.61	0.94	0.42	0.10	42.5	42.5		
-50	0.09	0.38	0.84	1.43	2.08	2.72	3.29	3.74	3.94	3.94	3.73	3.29	2.72	2.09	1.44	0.86	0.39	0.10	37.1	37.1		
-60	0.09	0.35	0.74	1.24	1.78	2.29	2.73	3.04	3.16	3.16	3.03	2.72	2.29	1.78	1.25	0.75	0.36	0.09	30.9	30.9		
-70	0.09	0.31	0.64	1.03	1.44	1.83	2.14	2.32	2.36	2.35	2.31	2.13	1.83	1.44	1.03	0.64	0.32	0.09	24.3	24.3		
-80	0.08	0.28	0.52	0.81	1.09	1.35	1.54	1.60	1.56	1.56	1.60	1.53	1.35	1.09	0.81	0.53	0.28	0.08	17.7	17.7		
-90	0.08	0.24	0.42	0.60	0.76	0.90	0.96	0.92	0.82	0.82	0.92	0.95	0.89	0.75	0.59	0.42	0.24	0.08	11.3	11.2		
	0.07	0.22	0.35	0.44	0.50	0.52	0.48	0.38	0.25	0.25	0.37	0.47	0.50	0.48	0.43	0.33	0.21	0.07	6.33	4.42		
HORIZONTAL (DEG)																						
Φ t	1.60	6.21	13.1	21.7	30.7	39.3	46.7	52.4	55.2	55.2	52.3	46.5	39.3	30.8	21.8	13.3	6.34	1.63	581			
Φ a	1.60	6.21	13.1	21.7	30.7	39.1	46.2	51.8	54.6	54.6	51.7	46.0	38.9	30.8	21.8	13.3	6.34	1.63		546		

Test System:HopooColor HPG1800  
Temperature:25.3DEG  
Operators:W  
Test Date:2023年07月04日

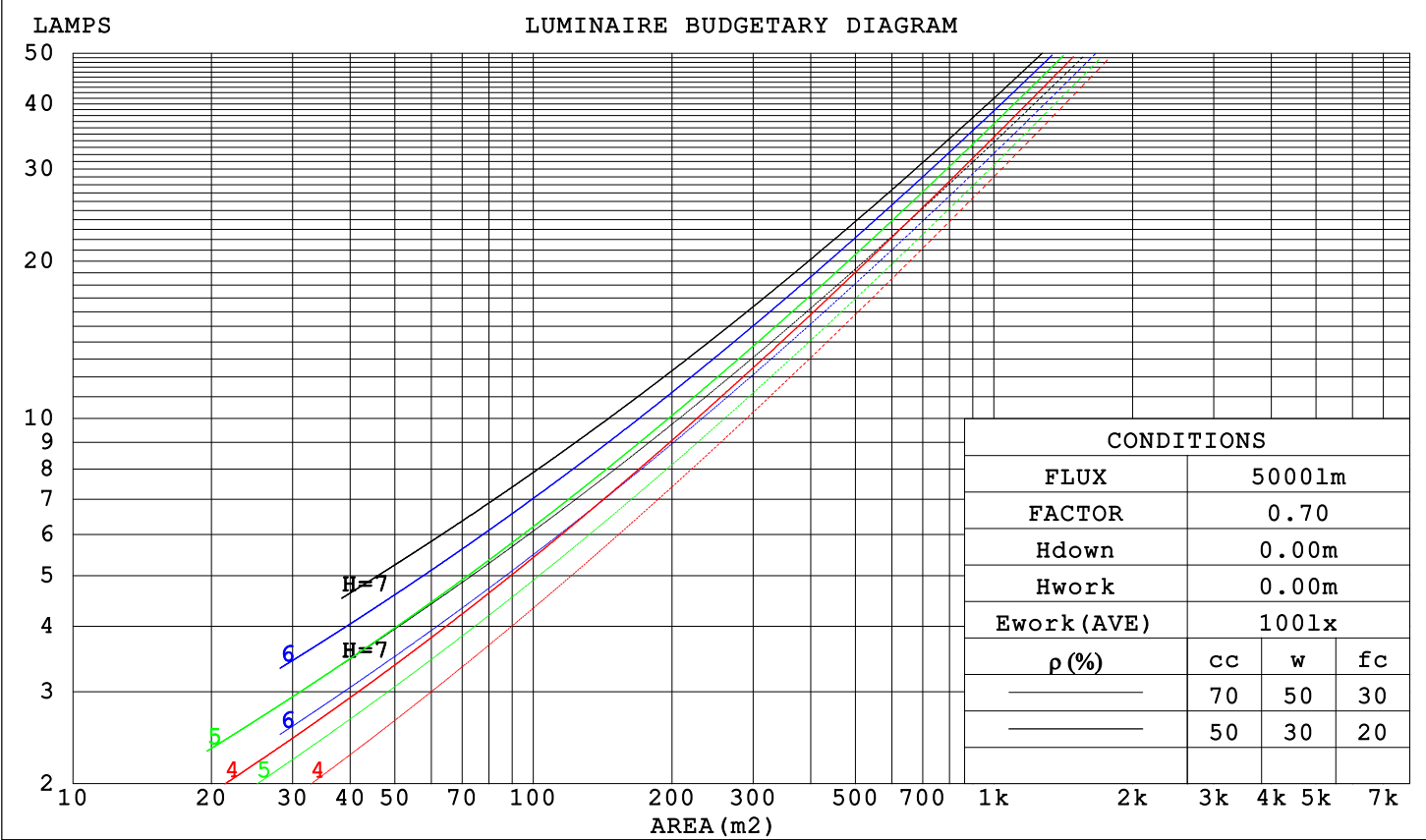
Test Set: 5.0deg/s C-Gamma (TYPE C)  
Humidity:65.0%  
Test Distance:8.450 m  
Remarks:

### CU AND LUMINAIRE BUDGETARY ESTIMATE DIAGRAM

Report number:

MANUFACTURER:															
Address:															
NAME: 200mA 6500K with trim								TYPE:				WEIGHT: 0.5			
SPECIFICATION:								DIMENSION: 0.245*0.125*0.07				SERIAL No.:			

pcc	80%			70%			50%			30%			10%			0
pw	50%	30%	10%	50%	30%	10%	50%	30%	10%	50%	30%	10%	50%	30%	10%	0
pfc	20%			20%			20%			20%			20%			0
RCR	RCR:Room Cavity Ratio			Coefficients of Utilization(CU)												
0.0	1.17	1.17	1.17	1.14	1.14	1.14	1.07	1.07	1.07	1.00	1.00	1.00	.95	.95	.95	.92
1.0	1.00	.96	.91	.97	.93	.89	.91	.88	.85	.86	.83	.81	.81	.79	.77	.74
2.0	.87	.80	.73	.84	.78	.72	.79	.74	.69	.75	.70	.66	.71	.67	.64	.61
3.0	.76	.67	.61	.74	.66	.60	.70	.63	.57	.66	.60	.55	.62	.58	.54	.51
4.0	.67	.58	.51	.65	.57	.50	.62	.54	.49	.58	.52	.47	.55	.50	.46	.43
5.0	.60	.51	.44	.58	.50	.43	.55	.48	.42	.52	.46	.41	.50	.44	.40	.37
6.0	.54	.45	.38	.52	.44	.38	.50	.42	.37	.47	.41	.36	.45	.39	.35	.33
7.0	.49	.40	.34	.48	.39	.33	.45	.38	.32	.43	.37	.32	.41	.35	.31	.29
8.0	.44	.36	.30	.43	.35	.30	.41	.34	.29	.40	.33	.28	.38	.32	.28	.26
9.0	.41	.33	.27	.40	.32	.27	.38	.31	.26	.37	.30	.26	.35	.29	.25	.23
10.0	.38	.30	.24	.37	.29	.24	.35	.28	.24	.34	.28	.23	.32	.27	.23	.21



Test System:HopooColor HPG1800  
Temperature:25.3DEG  
Operators:W  
Test Date:2023年07月04日

Test Set: 5.0deg/s C-Gamma (TYPE C)  
Humidity:65.0%  
Test Distance:8.450 m  
Remarks:



### WEC AND CCEC

Report number:

MANUFACTURER:															
Address:															
NAME: 200mA 6500K with trim								TYPE:				WEIGHT: 0.5			
SPECIFICATION:								DIMENSION: 0.245*0.125*0.07				SERIAL No.:			

pcc	80%			70%			50%			30%			10%			0
pw	50%	30%	10%	50%	30%	10%	50%	30%	10%	50%	30%	10%	50%	30%	10%	0
pf <sub>c</sub>	20%			20%			20%			20%			20%			0
RCR	RCR:Room Cavity Ratio						Wall Exitance Coefficients (WEC)									
0.0																
1.0	.342	.195	.062	.333	.190	.060	.315	.181	.058	.298	.172	.055	.283	.164	.053	
2.0	.308	.169	.052	.300	.165	.051	.284	.158	.049	.269	.151	.047	.255	.145	.046	
3.0	.280	.149	.045	.272	.146	.044	.258	.140	.042	.244	.134	.041	.232	.129	.040	
4.0	.255	.133	.039	.248	.130	.038	.235	.125	.037	.223	.120	.036	.212	.115	.035	
5.0	.234	.119	.035	.228	.117	.034	.216	.113	.033	.205	.108	.032	.195	.104	.031	
6.0	.216	.108	.031	.210	.106	.031	.200	.102	.030	.190	.099	.029	.181	.095	.028	
7.0	.200	.099	.028	.195	.097	.028	.186	.094	.027	.177	.091	.026	.168	.087	.026	
8.0	.186	.091	.026	.182	.090	.025	.173	.087	.025	.165	.084	.024	.157	.081	.024	
9.0	.174	.084	.024	.170	.083	.023	.162	.080	.023	.155	.078	.022	.148	.075	.022	
10.0	.164	.078	.022	.160	.077	.022	.153	.075	.021	.146	.072	.021	.139	.070	.020	

pcc	80%			70%			50%			30%			10%			0
pw	50%	30%	10%	50%	30%	10%	50%	30%	10%	50%	30%	10%	50%	30%	10%	0
pf <sub>c</sub>	20%			20%			20%			20%			20%			0
RCR	RCR:Room Cavity Ratio						Ceiling Cavity Exitance Coefficients (CCEC)									
0.0	.251	.251	.251	.214	.214	.214	.146	.146	.146	.084	.084	.084	.027	.027	.027	
1.0	.243	.217	.193	.208	.186	.166	.142	.128	.115	.082	.074	.067	.026	.024	.022	
2.0	.236	.193	.157	.202	.166	.136	.138	.115	.095	.080	.067	.056	.026	.022	.018	
3.0	.228	.176	.134	.195	.152	.117	.134	.105	.082	.077	.062	.048	.025	.020	.016	
4.0	.220	.163	.119	.189	.141	.104	.130	.098	.073	.075	.057	.043	.024	.019	.014	
5.0	.213	.153	.109	.183	.132	.095	.126	.092	.067	.073	.054	.040	.023	.018	.013	
6.0	.205	.145	.101	.176	.125	.088	.122	.088	.062	.071	.052	.037	.023	.017	.012	
7.0	.198	.138	.095	.171	.119	.083	.118	.084	.059	.068	.049	.035	.022	.016	.012	
8.0	.192	.132	.091	.165	.115	.079	.114	.080	.056	.066	.047	.034	.021	.016	.011	
9.0	.186	.127	.088	.160	.110	.077	.111	.078	.054	.065	.046	.032	.021	.015	.011	
10.0	.180	.123	.085	.155	.107	.074	.108	.075	.053	.063	.044	.031	.020	.015	.010	

Test System:HopooColor HPG1800  
Temperature:25.3DEG  
Operators:W  
Test Date:2023年07月04日

Test Set: 5.0deg/s C-Gamma (TYPE C)  
Humidity:65.0%  
Test Distance:8.450 m  
Remarks:

### Uncorrected UGR Table

Report number:

MANUFACTURER:											
Address:											
NAME: 200mA 6500K with trim					TYPE:			WEIGHT: 0.5			
SPECIFICATION:					DIMENSION: 0.245*0.125*0.07			SERIAL No.:			
ceiling/cavity	0.7	0.7	0.5	0.5	0.3	0.7	0.7	0.5	0.5	0.3	
walls	0.5	0.3	0.5	0.3	0.3	0.5	0.3	0.5	0.3	0.3	
working plane	0.2	0.2	0.2	0.2	0.2	0.2	0.2	0.2	0.2	0.2	
Room dimensions		Viewed crosswise					Viewed endwise				
x = 2H y = 2H	18.8	20.2	19.1	20.5	20.9	17.4	18.8	17.8	19.2	19.5	
	20.8	22.2	21.2	22.5	22.9	18.7	20.1	19.2	20.5	20.9	
	21.9	23.1	22.3	23.5	23.9	19.3	20.5	19.7	20.9	21.3	
	22.9	24.1	23.3	24.5	24.9	19.6	20.8	20.0	21.2	21.6	
	23.4	24.6	23.9	25.0	25.5	19.7	20.8	20.1	21.3	21.7	
	24.0	25.1	24.5	25.6	26.1	19.7	20.8	20.2	21.3	21.7	
4H	2H	19.3	20.5	19.7	20.9	21.4	18.2	19.5	18.7	19.9	20.3
	3H	21.5	22.7	22.0	23.1	23.6	19.9	21.0	20.3	21.4	21.9
	4H	22.7	23.7	23.2	24.2	24.7	20.6	21.6	21.1	22.0	22.5
	6H	24.0	24.9	24.5	25.4	25.9	21.1	22.0	21.6	22.5	23.0
	8H	24.6	25.5	25.1	26.0	26.5	21.2	22.1	21.8	22.6	23.1
	12H	25.3	26.1	25.9	26.6	27.2	21.3	22.1	21.9	22.6	23.2
8H	4H	23.0	23.8	23.5	24.4	24.9	21.2	22.0	21.7	22.5	23.1
	6H	24.5	25.2	25.0	25.7	26.3	22.0	22.7	22.5	23.2	23.8
	8H	25.3	25.9	25.8	26.5	27.1	22.3	22.9	22.9	23.5	24.1
	12H	26.2	26.8	26.8	27.3	28.0	22.5	23.1	23.1	23.7	24.3
12H	4H	23.0	23.8	23.6	24.3	24.9	21.3	22.1	21.8	22.6	23.2
	6H	24.5	25.2	25.1	25.7	26.4	22.2	22.9	22.8	23.4	24.0
	8H	25.4	26.0	26.0	26.6	27.2	22.7	23.2	23.3	23.8	24.5
Variations with the observer position at spacings:											
S = 1.0H	+ 0.1 / - 0.1					+ 0.1 / - 0.2					
1.5H	+ 0.2 / - 0.2					+ 0.2 / - 0.3					
2.0H	+ 0.2 / - 0.3					+ 0.2 / - 0.4					

CIE Pub.117 Corrected 580.6 lm Total Lamp Luminous Flux.(8log(F/F0) = -1.9)

Test System:HopooColor HPG1800  
 Temperature:25.3DEG  
 Operators:W  
 Test Date:2023年07月04日

Test Set: 5.0deg/s C-Gamma (TYPE C)  
 Humidity:65.0%  
 Test Distance:8.450 m  
 Remarks:

UTILIZATION FACTORS TABLE

Report number:

MANUFACTURER:										
Address:										
NAME: 200mA 6500K with trim					TYPE:			WEIGHT: 0.5		
SPECIFICATION:					DIMENSION: 0.245*0.125*0.07			SERIAL No.:		

REFLECTANCE										
Ceiling	0.8	0.8	0.8	0.7	0.7	0.7	0.5	0.5	0.5	0
Walls	0.7	0.5	0.3	0.7	0.5	0.3	0.7	0.5	0.3	0
Working plane	0.2	0.2	0.2	0.2	0.2	0.2	0.2	0.2	0.2	0
ROOM INDEX	UTILIZATION FACTORS (PERCENT) $k(RI) \times RCR = 5$									
$k = 0.60$	54	42	35	53	42	35	51	41	34	28
0.80	63	51	44	62	51	43	60	50	43	36
1.00	71	60	52	70	59	51	67	60	51	43
1.25	78	67	59	77	66	59	73	64	58	49
1.50	83	72	65	81	71	64	77	69	63	54
2.00	90	81	73	88	79	72	83	76	70	61
2.50	94	86	79	92	84	77	87	80	75	65
3.00	98	90	84	95	88	82	90	84	79	69
4.00	102	95	90	99	93	88	94	89	85	73
5.00	105	99	94	102	96	92	96	92	88	76
ROOM INDEX	UF(total)									Direct
According to DIN EN 13032-2 2004				Suspended				SHRNOM = 1.25		

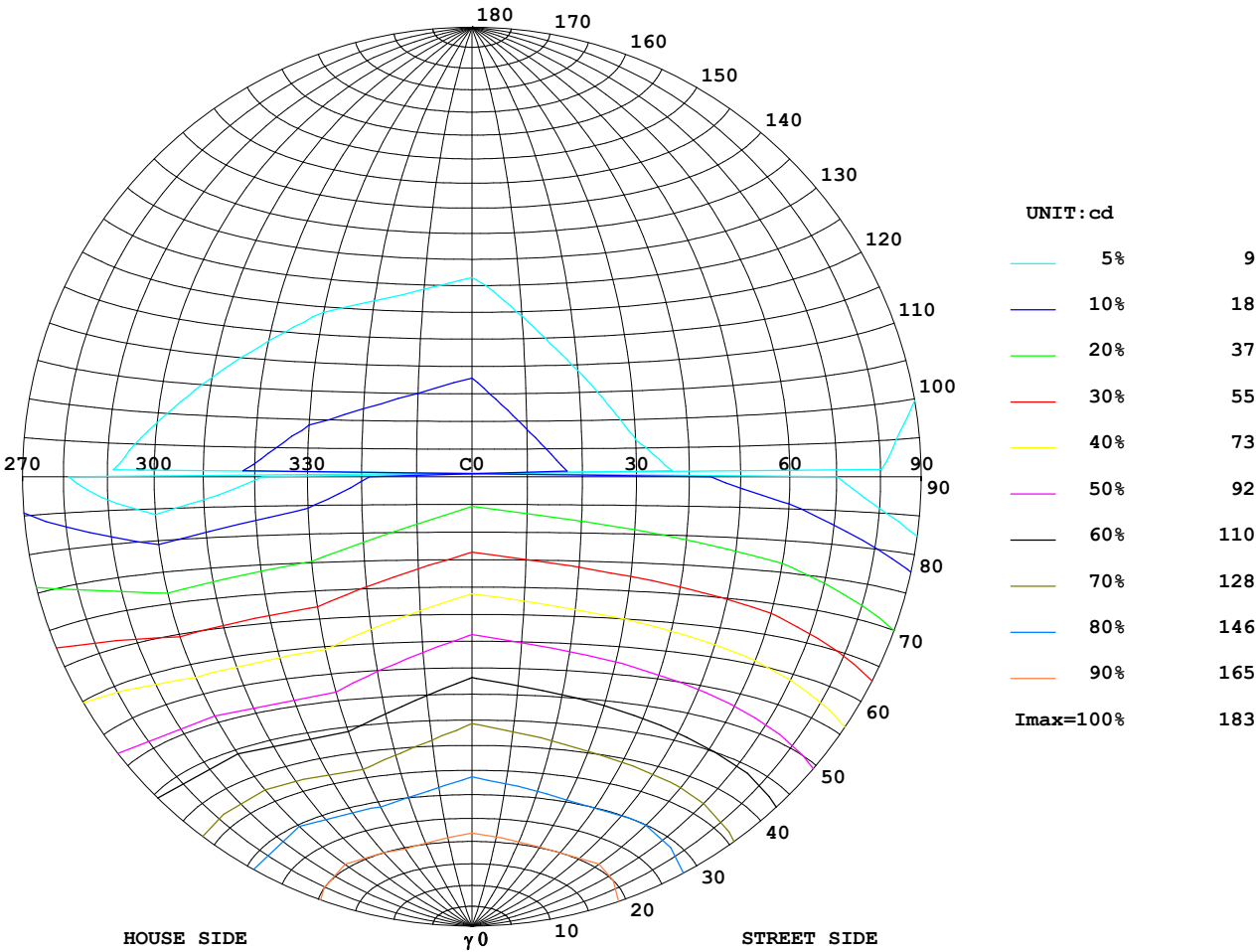
Test System:HopooColor HPG1800  
Temperature:25.3DEG  
Operators:W  
Test Date:2023年07月04日

Test Set: 5.0deg/s C-Gamma (TYPE C)  
Humidity:65.0%  
Test Distance:8.450 m  
Remarks:

ISOCANDELA DIAGRAM

Report number:

MANUFACTURER:		
Address:		
NAME: 200mA 6500K with trim	TYPE:	WEIGHT: 0.5
SPECIFICATION:	DIMENSION: 0.245*0.125*0.07	SERIAL No.:



Test System:HopooColor HPG1800  
Temperature:25.3DEG  
Operators:W  
Test Date:2023年07月04日

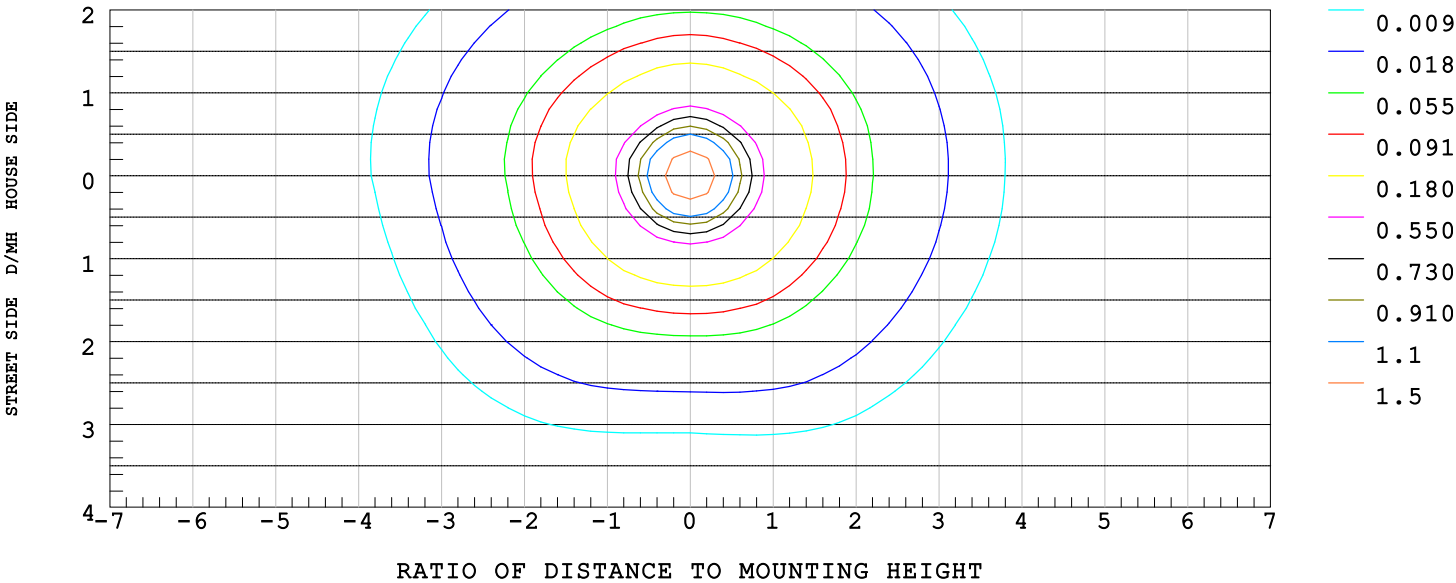
Test Set: 5.0deg/s C-Gamma (TYPE C)  
Humidity:65.0%  
Test Distance:8.450 m  
Remarks:

ISOLUX DIAGRAM

Report number:

MANUFACTURER:		
Address:		
NAME: 200mA 6500K with trim	TYPE:	WEIGHT: 0.5
SPECIFICATION:	DIMENSION: 0.245*0.125*0.07	SERIAL No.:

ILLUMINANCE AT MH=10 m,Enadir = 1.83 lx



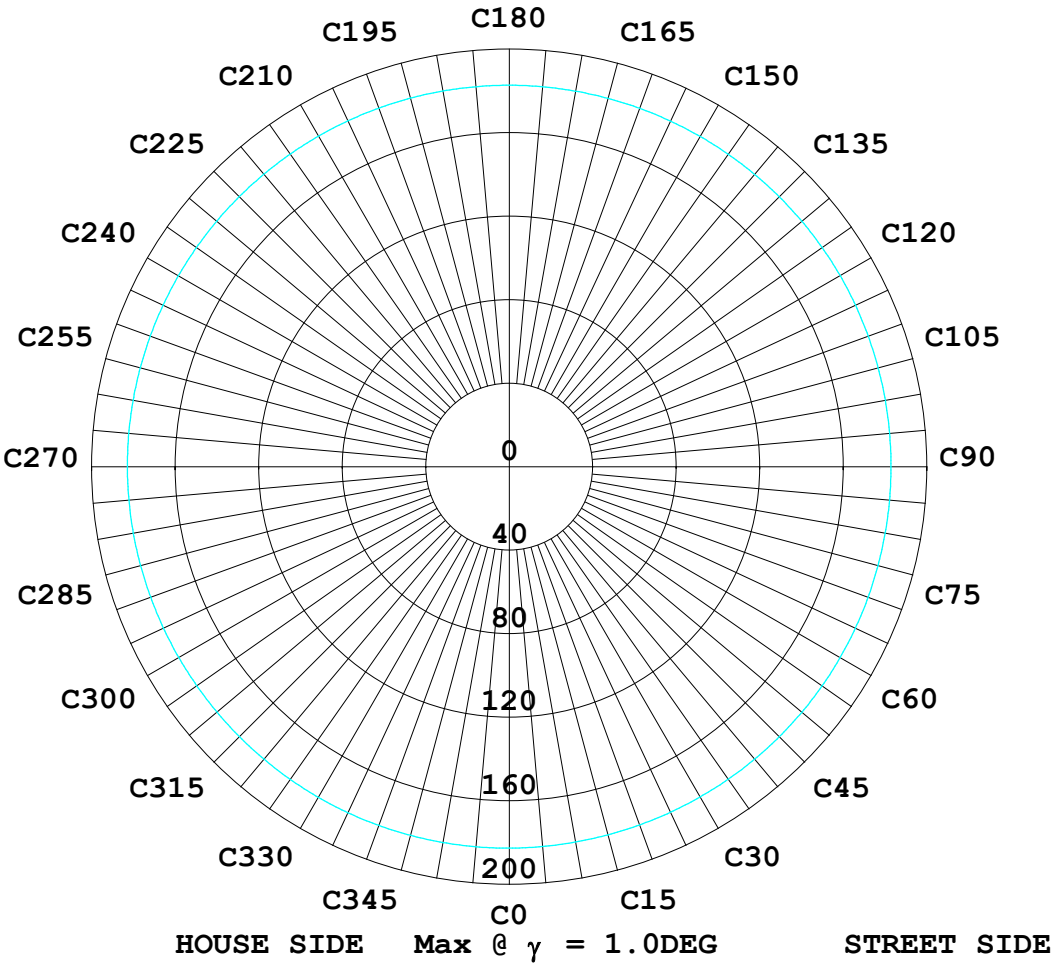
Test System:HopooColor HPG1800  
Temperature:25.3DEG  
Operators:W  
Test Date:2023年07月04日

Test Set: 5.0deg/s C-Gamma (TYPE C)  
Humidity:65.0%  
Test Distance:8.450 m  
Remarks:

ISOCANDELA DIAGRAM

Report number:

MANUFACTURER:		
Address:		
NAME: 200mA 6500K with trim	TYPE:	WEIGHT: 0.5
SPECIFICATION:	DIMENSION: 0.245*0.125*0.07	SERIAL No.:



Test System:HopooColor HPG1800	Test Set: 5.0deg/s    C-Gamma (TYPE C)
Temperature:25.3DEG	Humidity:65.0%
Operators:W	Test Distance:8.450 m
Test Date:2023年07月04日	Remarks:

LUMINOUS DISTRIBUTION INTENSITY DATA

Report number:

MANUFACTURER:		
Address:		
NAME: 200mA 6500K with trim	TYPE:	WEIGHT: 0.5
SPECIFICATION:	DIMENSION: 0.245*0.125*0.07	SERIAL No.:

UNIT: cd

C (DEG) γ (DEG)	0	30	60	90	120	150	180	210	240	270	300	330
0.0	183	183	183	183	183	183	183	183	183	183	183	183
5.0	182	181	182	182	182	182	182	182	181	182	181	182
10.0	179	178	179	178	179	178	178	179	178	179	178	179
15.0	174	172	173	171	174	172	173	174	172	173	172	174
20.0	167	165	166	163	166	165	166	168	164	166	164	168
25.0	160	156	157	153	157	156	159	159	155	156	155	159
30.0	152	147	146	142	146	147	151	151	144	146	144	150
35.0	144	138	135	130	135	138	143	141	132	134	132	141
40.0	136	129	123	117	123	128	134	132	120	121	120	132
45.0	127	118	110	104	111	118	124	122	108	108	107	122
50.0	116	108	97.9	90.1	98.4	107	114	112	96.3	94.3	95.5	112
55.0	106	96.5	86.5	76.3	86.8	96.1	103	101	84.5	80.9	83.7	101
60.0	94.1	84.8	74.6	62.6	74.9	84.4	91.5	88.9	72.7	67.2	71.8	89.1
65.0	82.2	73.1	62.7	49.5	63.1	72.8	79.8	77.1	61.1	53.7	60.1	77.1
70.0	70.2	60.9	51.1	36.4	51.5	60.9	67.6	65.4	49.4	40.9	48.4	65.3
75.0	57.9	49.1	39.6	24.2	40.0	49.3	55.6	53.6	38.0	28.3	36.9	53.2
80.0	46.1	38.2	28.7	13.5	29.2	38.7	44.5	42.4	27.6	16.8	26.4	41.6
85.0	35.9	28.7	19.5	5.21	20.2	29.6	34.9	32.7	18.8	7.71	17.5	31.7
90.0	28.5	22.8	13.2	1.21	14.0	24.0	28.7	25.9	13.3	2.14	11.9	24.4
95.0	25.2	20.2	10.4	0.93	11.2	21.3	25.7	22.7	11.0	1.14	9.71	21.2
100.0	22.4	17.7	8.56	1.07	9.21	18.7	22.9	19.9	9.06	1.14	7.85	18.7
105.0	19.7	15.3	6.78	1.14	7.28	16.2	20.1	17.4	7.14	1.21	6.14	16.2
110.0	17.2	13.1	5.06	1.21	5.49	13.9	17.5	14.9	5.35	1.28	4.49	13.9
115.0	14.7	10.8	3.42	1.35	3.78	11.5	14.9	12.7	3.64	1.35	2.99	11.6
120.0	12.2	8.71	2.14	1.49	2.35	9.35	12.4	10.3	2.28	1.49	1.78	9.49
125.0	9.92	6.35	1.64	1.57	1.64	6.92	9.99	7.92	1.64	1.57	1.64	7.14
130.0	7.35	4.21	1.71	1.71	1.71	4.64	7.35	5.56	1.71	1.71	1.71	4.92
135.0	4.92	2.42	1.85	1.85	1.85	2.71	4.78	3.49	1.85	1.78	1.85	2.99
140.0	2.78	1.92	1.92	1.92	1.92	1.92	2.78	2.14	1.92	1.92	1.92	2.07
145.0	2.07	1.99	1.99	1.99	1.99	1.99	2.14	2.14	2.07	1.99	2.07	2.14
150.0	2.14	2.07	2.07	2.14	2.07	2.07	2.14	2.21	2.14	2.14	2.14	2.21
155.0	2.14	2.14	2.14	2.21	2.14	2.14	2.28	2.21	2.21	2.21	2.21	2.28
160.0	2.21	2.21	2.21	2.28	2.21	2.21	2.35	2.28	2.28	2.28	2.28	2.28
165.0	2.28	2.28	2.28	2.28	2.28	2.28	2.35	2.35	2.35	2.35	2.35	2.35
170.0	2.28	2.35	2.35	2.35	2.35	2.35	2.42	2.42	2.35	2.42	2.35	2.42
175.0	2.35	2.42	2.35	2.35	2.35	2.35	2.42	2.42	2.42	2.42	2.42	2.42
180.0	2.42	2.42	2.42	2.42	2.42	2.42	2.42	2.42	2.42	2.35	2.42	2.42

Test System:HopooColor HPG1800  
Temperature:25.3DEG  
Operators:W  
Test Date:2023年07月04日

Test Set: 5.0deg/s C-Gamma (TYPE C)  
Humidity:65.0%  
Test Distance:8.450 m  
Remarks: